



**DUNNAIR**  
(Aust) Pty Ltd

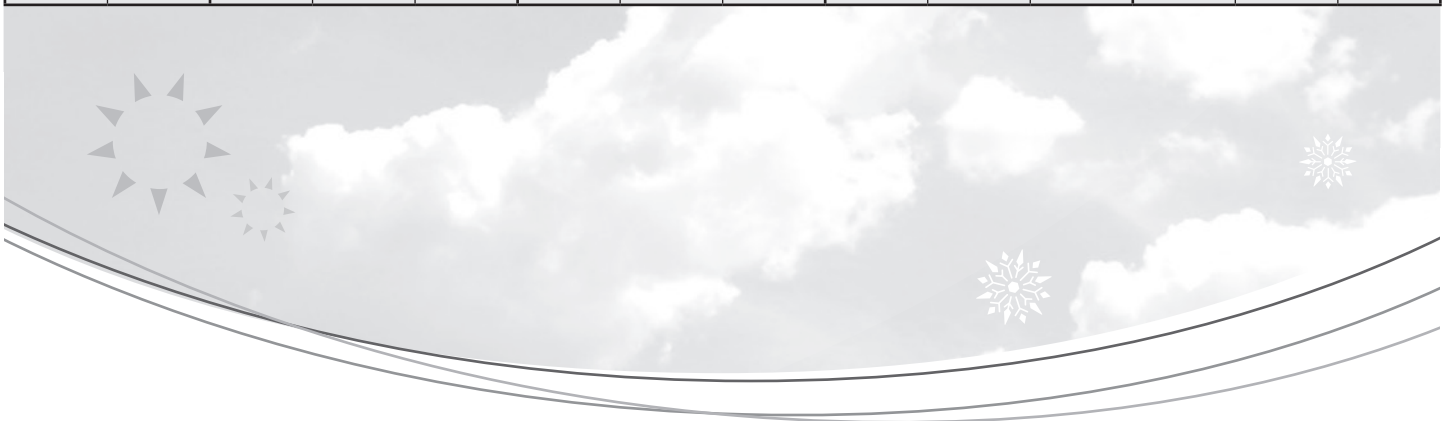
R407c Refrigerant

**SH200**

**Split Ducted Model**

Performance Data

INDOOR COIL ENTERING AIR TEMP °C		OUTDOOR COIL ENTERING AIR TEMPERATURE °C											
		30°C			35°C			40°C			45°C		
		Tot Cap KW	Sens Cap KW	LWB °C	Tot Cap KW	Sens Cap KW	LWB °C	Tot Cap KW	Sens Cap KW	LWB °C	Tot Cap KW	Sens Cap KW	LWB °C
DB °C	WB °C												
21	17	198.1	122.0	11.8	187.8	117.7	12.1	177.0	113.0	12.6	169.5	113.0	12.8
	18	205.1	110.1	12.5	194.5	105.6	13.3	183.1	100.6	13.6	175.9	97.5	14.0
	19	212.2	97.6	14.3	201.2	93.1	14.6	189.4	88.1	15.1	182.5	85.3	15.3
	20	220.1	84.5	15.3	208.6	79.8	15.7	196.1	74.9	16.1	189.3	71.8	16.5
23	17	198.8	145.8	11.7	188.6	141.6	12.1	177.8	136.9	12.5	170.2	133.8	12.8
	18	205.1	133.7	12.9	194.5	129.1	13.2	183.1	124.2	13.6	175.9	121.1	14.0
	19	212.2	121.2	14.1	201.4	116.7	14.5	189.5	112.0	15.0	182.5	108.9	15.3
	20	220.3	108.1	15.3	208.6	103.4	15.7	196.2	98.5	16.1	189.5	95.4	16.4
	21	228.2	95.1	16.4	216.4	190.4	16.8	203.9	85.1	17.2	196.6	82.0	17.6
25	17	200.8	167.7	11.6	190.5	163.0	11.9	179.8	157.9	12.5	172.8	154.7	12.7
	18	205.6	162.1	13.0	195.0	153.8	13.3	183.7	148.8	13.8	176.5	145.7	14.1
	19	212.3	154.4	14.1	201.4	140.2	14.5	189.5	135.5	15.0	182.8	132.5	15.2
	20	220.3	145.5	15.3	208.9	127.2	15.7	196.5	121.9	16.1	189.5	119.2	16.4
	21	228.3	135.8	16.4	216.4	105.9	16.8	203.9	108.6	17.2	196.6	105.9	17.4
27	17	203.9	185.9	11.5	194.7	180.4	11.8	184.2	174.0	12.2	177.5	170.1	12.6
	18	208.0	181.8	12.8	196.9	177.4	13.1	185.6	172.4	13.5	180.3	169.3	13.8
	19	214.4	168.7	13.9	201.8	164.3	14.3	190.0	159.3	14.7	183.1	156.3	15.0
	20	220.5	156.8	15.2	208.9	152.1	15.5	196.5	147.3	15.9	189.5	144.4	16.1
	21	228.4	142.1	16.4	210.6	137.4	16.8	203.9	132.2	17.2	196.7	129.4	17.4
29	17	209.5	192.2	11.4	200.0	194.8	11.8	189.5	187.1	12.2	181.8	183.0	12.5
	18	211.4	188.9	12.7	201.1	191.8	13.1	190.0	185.9	13.5	183.1	177.4	13.8
	19	214.4	185.6	14.0	203.6	189.5	14.3	191.7	184.6	14.7	183.8	174.1	15.1
	20	220.5	179.9	15.2	209.1	175.1	15.5	196.7	169.6	16.0	189.8	167.1	16.3
	21	228.4	165.7	16.4	216.6	160.9	16.8	203.9	155.8	17.2	196.7	152.9	17.4
31	17	216.1	214.8	11.0	207.0	206.6	11.4	195.9	197.1	11.8	189.8	191.4	12.0
	18	217.2	212.3	12.5	207.2	205.6	12.8	196.7	196.5	13.2	190.8	190.7	13.5
	19	218.3	210.0	13.8	208.0	204.8	14.2	196.7	195.5	14.6	190.8	190.1	14.8
	20	221.9	204.5	15.1	210.8	200.1	15.5	198.3	193.0	15.9	191.4	189.6	16.3
	21	228.9	191.0	16.4	216.9	186.2	16.8	203.9	188.9	17.2	196.9	178.2	17.6



### Technical Specification SH200 Split Ducted Model

Indoor Unit Model Number	SH200N	Nominal Evaporator Air Flow (l/s)	10500
Outdoor Unit Model Number	SH200W	Number of Compressors	2
Total Cooling Capacity (kW)	201.8	Power V / Ph	415 / 3
Sensible Cooling Capacity (kW)	164.3	Nominal Max. Current (A)	190.3
Heating Capacity (kW)	196.2	Power Input (kW)	85.8
*Cooling cap entering air 27°/19°C (DB/WB) Ambient 35°C		** Heating cap entering air 21°C Outdoor ambient 7°C	

### Cooling Performance Correction

Capacity	% Rated Air Flow				
	80	90	100	110	120
Total	0.95	0.98	1.00	1.02	1.04
Sensible	0.89	0.95	1.00	1.05	1.09

### Heating Capacity

Amb. °C DB	0	4	8	12	18
Cap kW	147.3	162.6	188.4	207.0	249.0

Heating cap is based on 21°C DB. Frost formation will have greatest effect at amb 4 to 6°C. Above 8°C defrost is unlikely and a factor of 1 may be used.

### Heating Performance Correction

% Air Flow	×	Return Air Temp °C	×	O/door Air Temp °C	Approx. Defrost Factor
80	0.93	15	1.05	0	0.80
90	0.97	18	1.03	2	0.78
100	1.00	21	1.00	4–6	0.75
110	1.03	24	0.97	7	0.87
120	1.05	27	0.95	8	1.00

### Compressors

Number Per Unit	2
Type	Hermetic Scroll
Nominal RPM	2900
Nominal Max. Amps	2 × 57.7
Locked Rotor Amps	2 × 320
Displacement (m³/h)	2 × 111.6

### Electrical Controls and Safeties

Indoor Fan Overload	Internal	Defrost Cycle Start °C	-4
Outdoor Fan Overload	Internal	Defrost Cycle End °C	10
Compressor Delay Timer	300 sec	Min. Defrost Cycle	33 mins
High Pressure Switch (kPa)	2800	Max. Defrost Period	4 mins
Low Pressure Switch (kPa)	100		

### Standard Features

HP/LP Cutouts	Thermal Overload Protection
Crankcase Heater	Limit Start Timer
Automatic De-Ice	Indoor 25mm Insulation
Gas Separator	240 Volt Control

### Evaporator Coil

Type	Copper tube alum. fins
Face Area (m²)	2 × 1.7

### Condenser Coil

Type	Copper tube alum. fins
Face Area (m²)	2 × 1.9

### Evaporator Fan

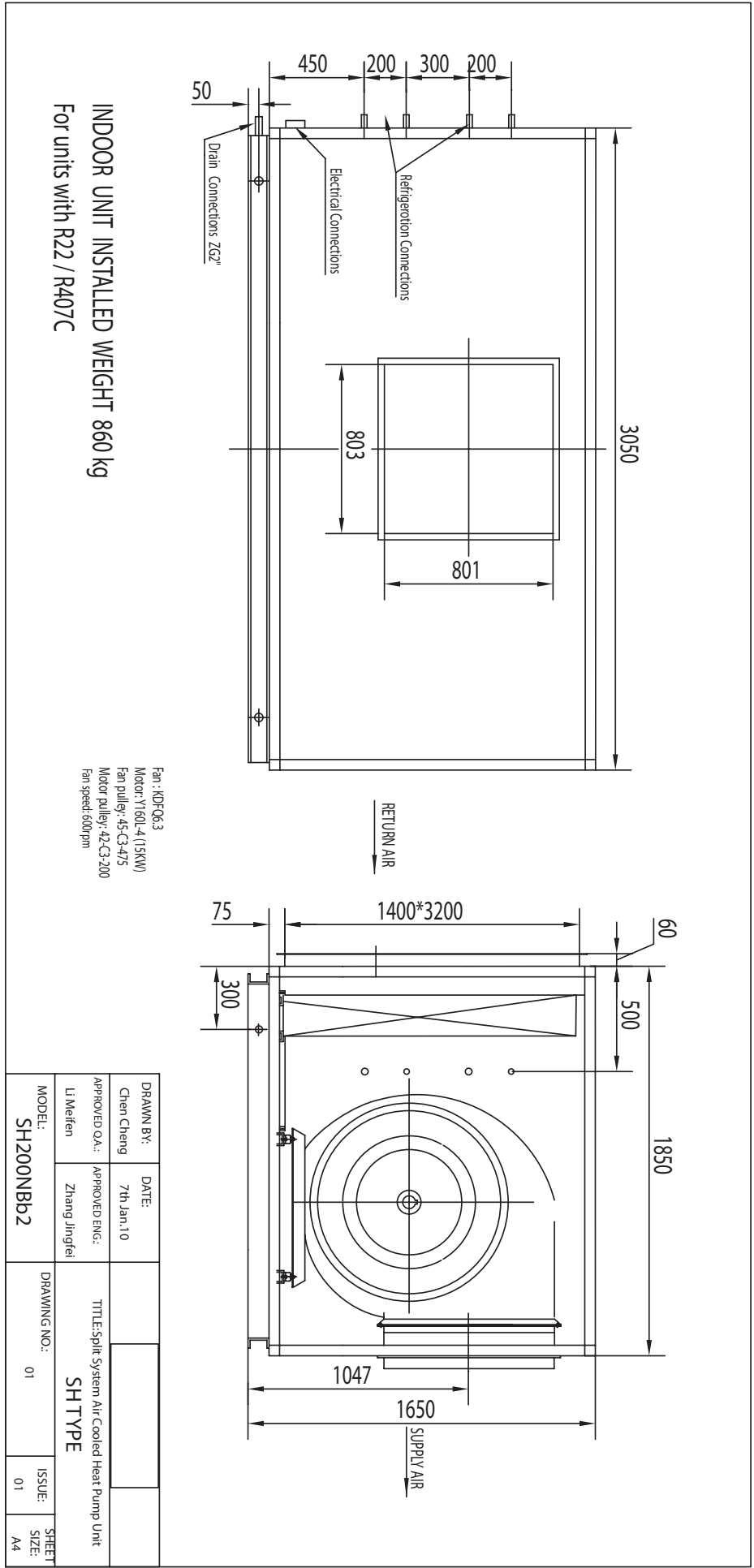
Number of Fans	1
Type	Centrifugal
Drive	Belt
Motor V / Ph / Hz	415 / 3 / 50
Motor Output Power (kW)	15
Max. Fan Speed (rpm)	600

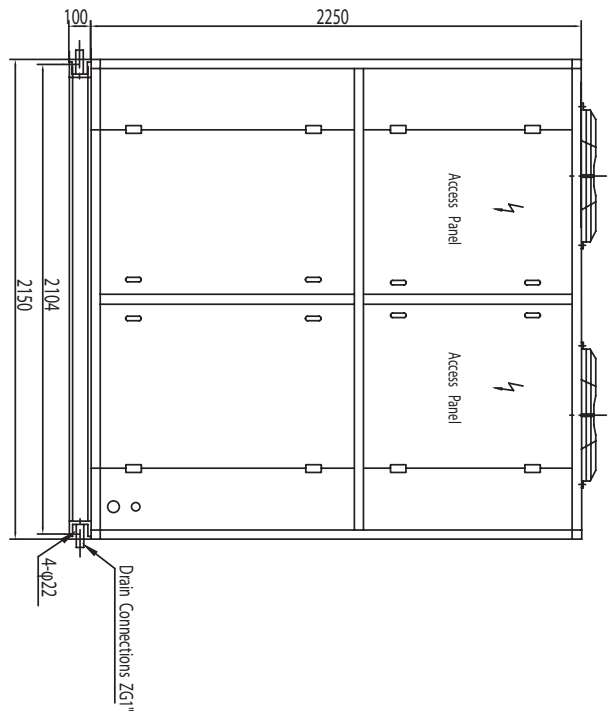
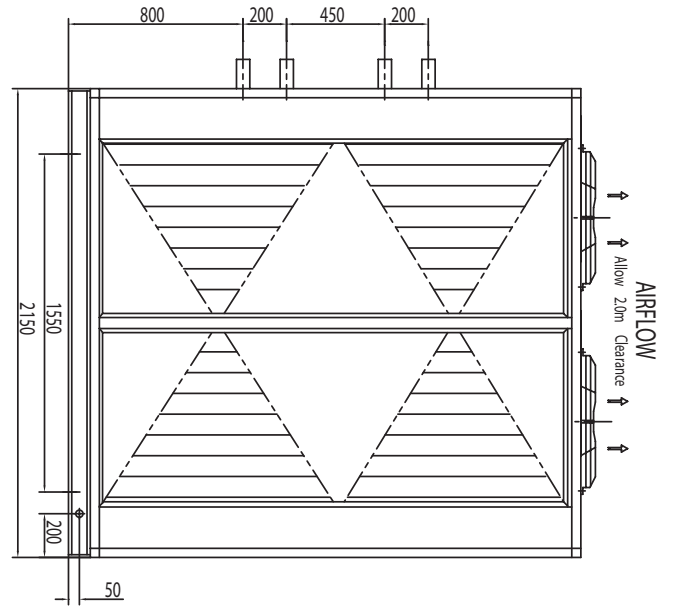
### Condenser Fan

Number of Fans	4
Type	Axial
Drive	Direct
Motor Output Power (kW)	4 × 1.5
Motor V / Ph / Hz	415 / 3 / 50

### Refrigerant System

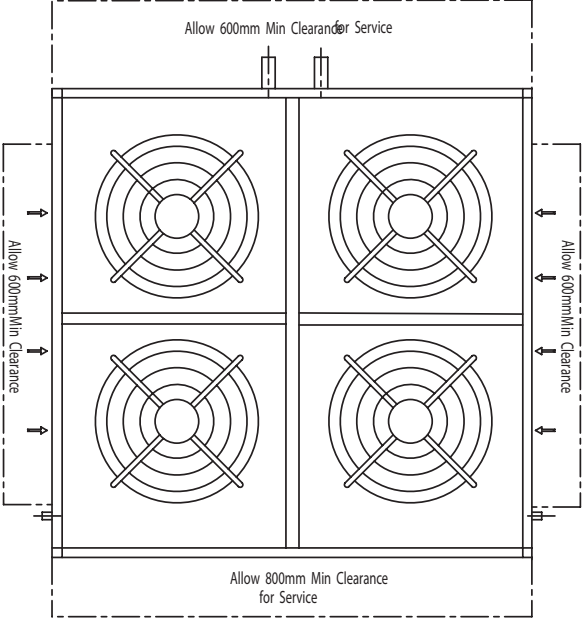
Refrigerant Type	R407c
Nominal Charge Required	2 × 25.4kg
Line Size (mm)	
Liquid 0–15 metres	28
Gas 0–15 metres	54
Liquid 15–30 metres	28
Gas 15–30 metres	54
Service Connection	Rotor Lock Valve
Expansion Control	TX Valve





SIDE ELEVATION

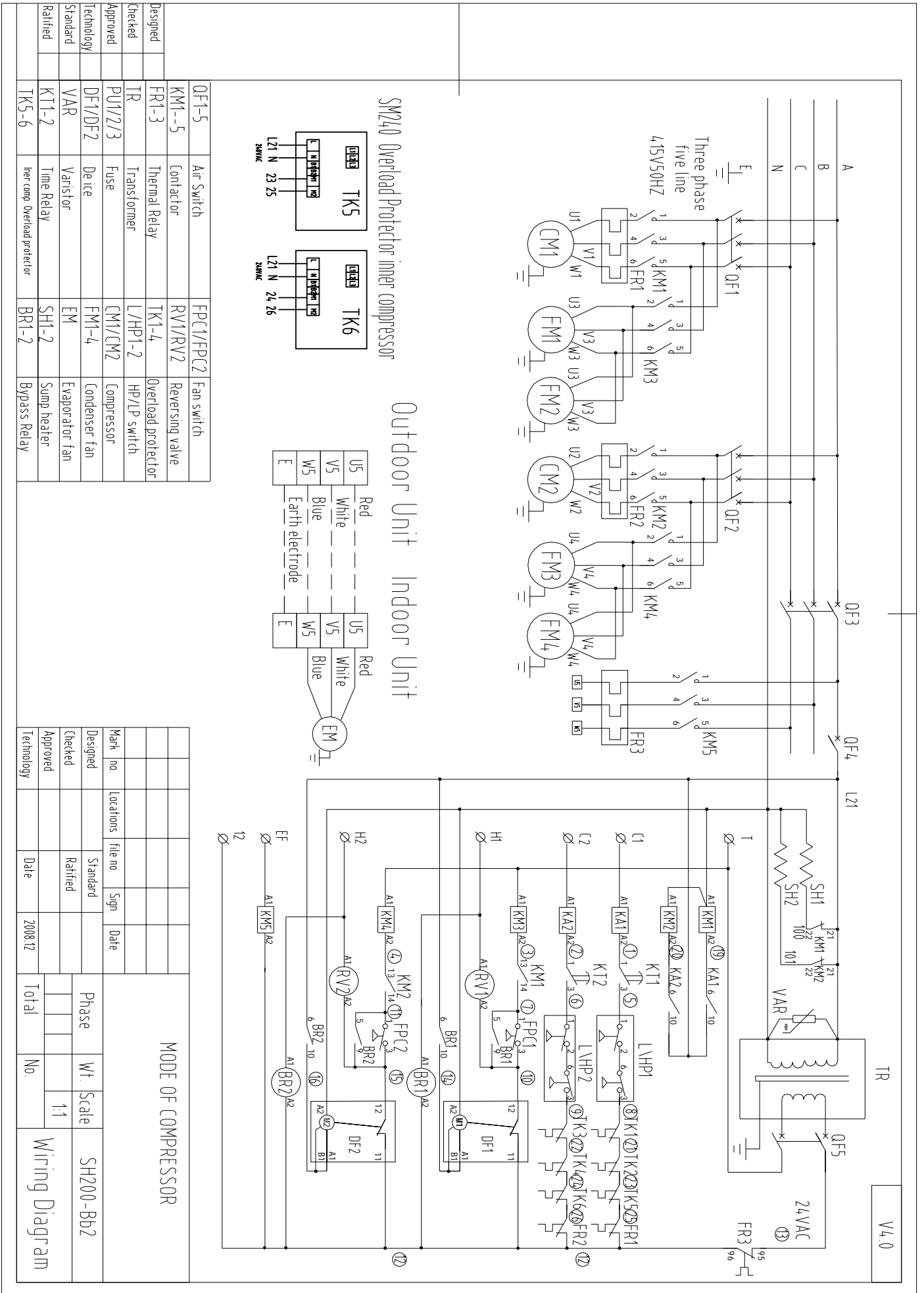
RERA VIEW

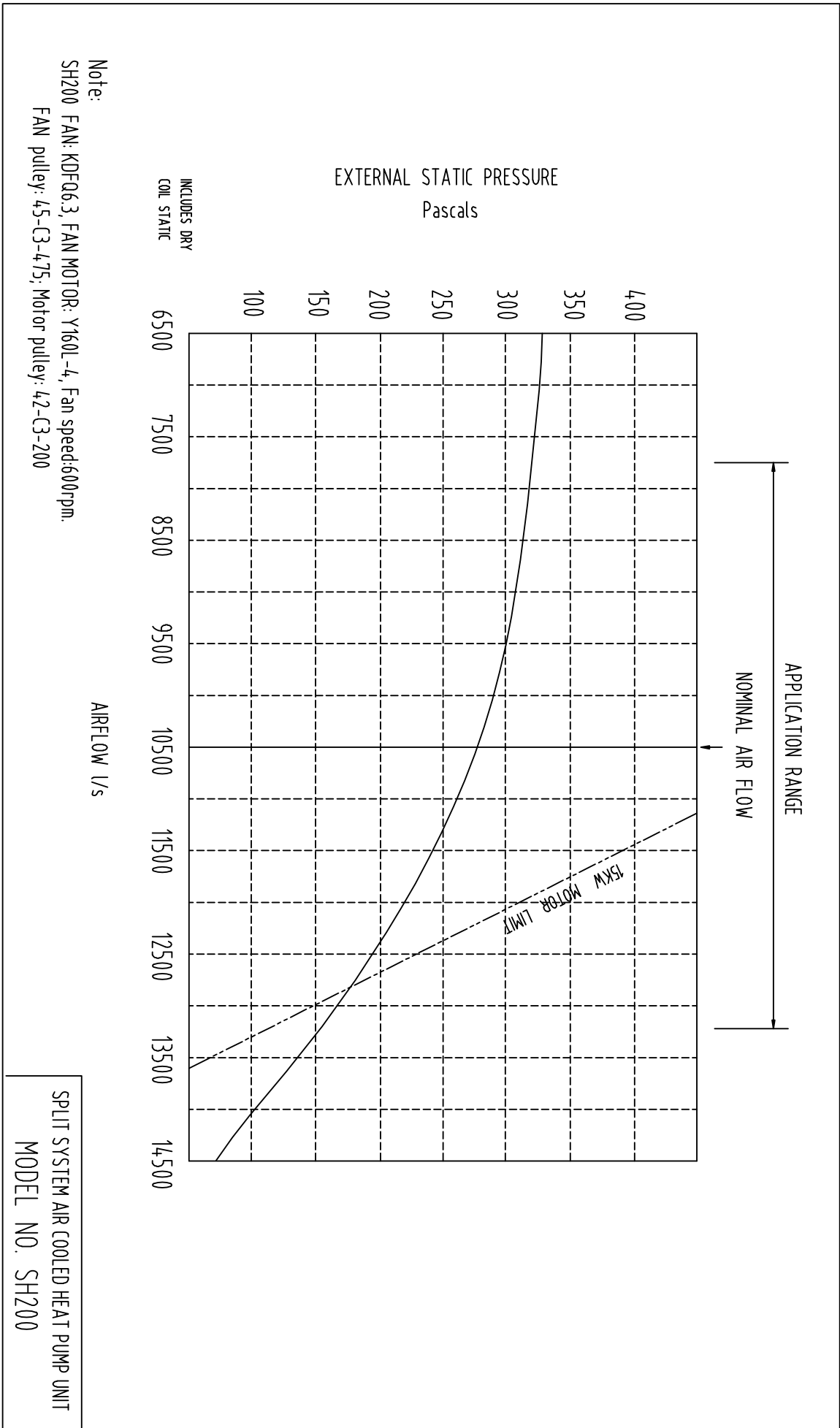


PLAN VIEW

**OUTDOOR UNIT INSTALLED WEIGHT 1400 kg**  
**For units with R22/ R407C**

DRAWN BY: Chen Cheng	DATE: 7th Jan, 10	TITLE: Split System Air Cooled Heat Pump Unit	
APPROVED O.A.: Li Meifen	APPROVED ENG.: Zhang Jingfei	SHEET SH TYPE	
MODEL: SH200WBb2	DRAWING NO.: 01	ISSUE: 01	SHEET SIZE: A4





Note:  
 SH200 FAN: KDE063, FAN MOTOR: Y160L-4, Fan speed: 600rpm.  
 FAN pulley: 45-C3-475, Motor pulley: 42-C3-200

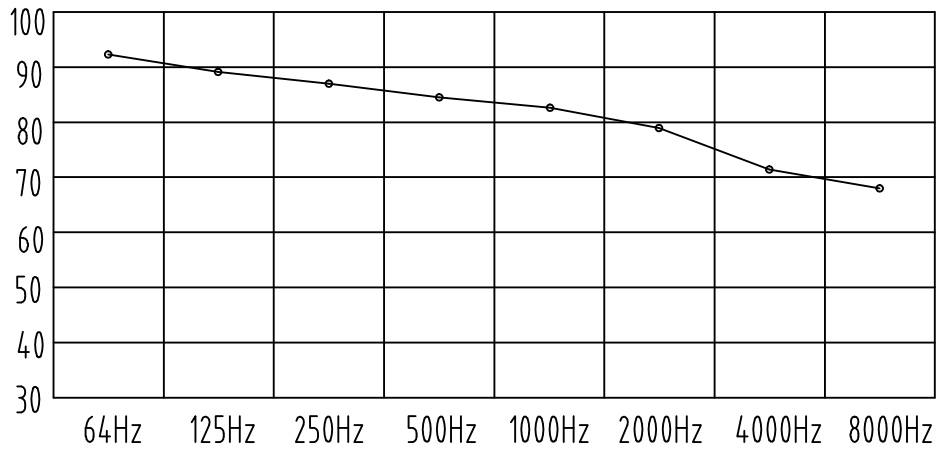
SPLIT SYSTEM AIR COOLED HEAT PUMP UNIT  
 MODEL NO. SH200

SH200W Noise rate analysing chart

A Class: 87.2dB

Hz	dB
64Hz	92.1
125Hz	89.0
250Hz	87.1
500Hz	84.4
1000Hz	82.6
2000Hz	78.7
4000Hz	70.9
8000Hz	68.1

Noise rate analysing chart ( A Class: 87.2dB) dB



SH200N Noise rate analysing chart

A Class: 82.6dB

Hz	dB
64Hz	91.5
125Hz	86.4
250Hz	82.5
500Hz	78.4
1000Hz	78.6
2000Hz	73.1
4000Hz	70.4
8000Hz	63.1

Noise rate analysing chart ( A Class: 82.6dB) dB

