

Technical Specification AHU60R Split Ducted Model

Indoor Unit Model Number	AHU60R	Nominal Evaporator Air Flow (l/s)	1000
Outdoor Unit Model Number	LCU60R	Number of Compressors	1
Total Cooling Capacity (kW)*	17.58	Power Requirements (Volt / Phase)	415/3
Sensible Cooling Capacity (kW)*	14.31	Normal Max. Current (Amps / Phase)	16.6
Heating Capacity (kW)**	17.82		

*Entering are @ 27/19 °C and ambient 35 °C

** Entering air @ 21 °C DB and 7 °C ambient

Air Quantity Multiplying Factors

	% Rated Air Quantity-Nominal 1000 l/s				
	80	90	100	110	120
Capacity	0.95	0.98	1.00	1.02	1.04
Total	0.89	0.95	1.00	1.05	1.09

Heating Performance Data

	Outdoor Coil Entering DB temp				
	0	4	8	12	18
Heating Capacity kW	15.6	16.9	18	19.7	21.7

Heating Performance Correction

% Rated Air Quality	Multiplier	Return Air Temp °C	Multiplier	Outdoor Air Temp °C	Approx. Defrost Factor
80	0.93	15	1.05	0	0.80
90	0.97	18	1.03	2	0.78
100	1.00	21	1.00	4-6	0.75
110	1.03	24	0.97	7	0.87
120	1.05	27	0.95	8	1.00

Compressor

Number Per Unit	1
Type	Scroll
RPM (Nom)	2900
Normal Max. Current (Amps / Phase)	11
Locked Rotor Current (Amps / Phase)	63
Displacement (m ³ /h)	11.62

Electrical Controls and Safeties

High Pressure Switch(Setting kPa)	4100	Defrost	
Low Pressure Switch(Setting kPa)	170	Initiation Temperature (°C)	-4
Indoor Fan Overload	Internal	Termination Temperature (°C)	10
Outdoor Fan Overload	Internal	Min. Period Between De-Ice (min)	30
Compressor Delay Timer	180 sec	Max. De-Ice Period (min)	10

Standard Features

Auto reset high pressure and auto reset low pressure cutouts	
Thermal overload protection on all motors	Suction line accumulator
Compressor crankcase heater	Automatic de-ice system
Limit start timer (anti short cycling)	Thermally insulated indoor unit

Evaporator

Type	Copper Tube/Aluminium Fin
Face Area (m ²)	0.41
Air Quantity (l/s)	1000

Evaporator (Indoor)

Number of Fans	2
Type	Centrifugal
Drive	Direct
Motor Voltage/Phase/Frequency	220-240/1/50
Motor (kW) Standard	2x 0.250
Max. Fan Speed (rpm)	1250

Electrical

Power Requirements	3 Phase / 415V / 50Hz
Recommend fuse size (Amps/Phase)	25

Condenser

Type	Copper Tube / Aluminium Fins
Face Area (m ²)	1.05

Condenser (Outdoor)

Number of Fans	2
Type	Axial
Drive	Direct
Type	Enclosed
Motor Watts / rpm	2x80 / 900
Motor Voltage/Phase/Frequency	240 / 1 / 50

Refrigerant System

Refrigerant Type	R410a
Charge (kg)	3.45
Line Size (mm)	
Liquid 0-10 metres	12.7
Gas 0-10 meters	19.05
Max.height difference metres	25
Max.pipe length metres	50
Service Connections	Pack valve
Expansion Control - in outdoor unit	Capillary

DUNNAIR (Aust) Pty Ltd supports a policy of continuous product improvement. Therefore specifications and designs are subject to change without prior notice.

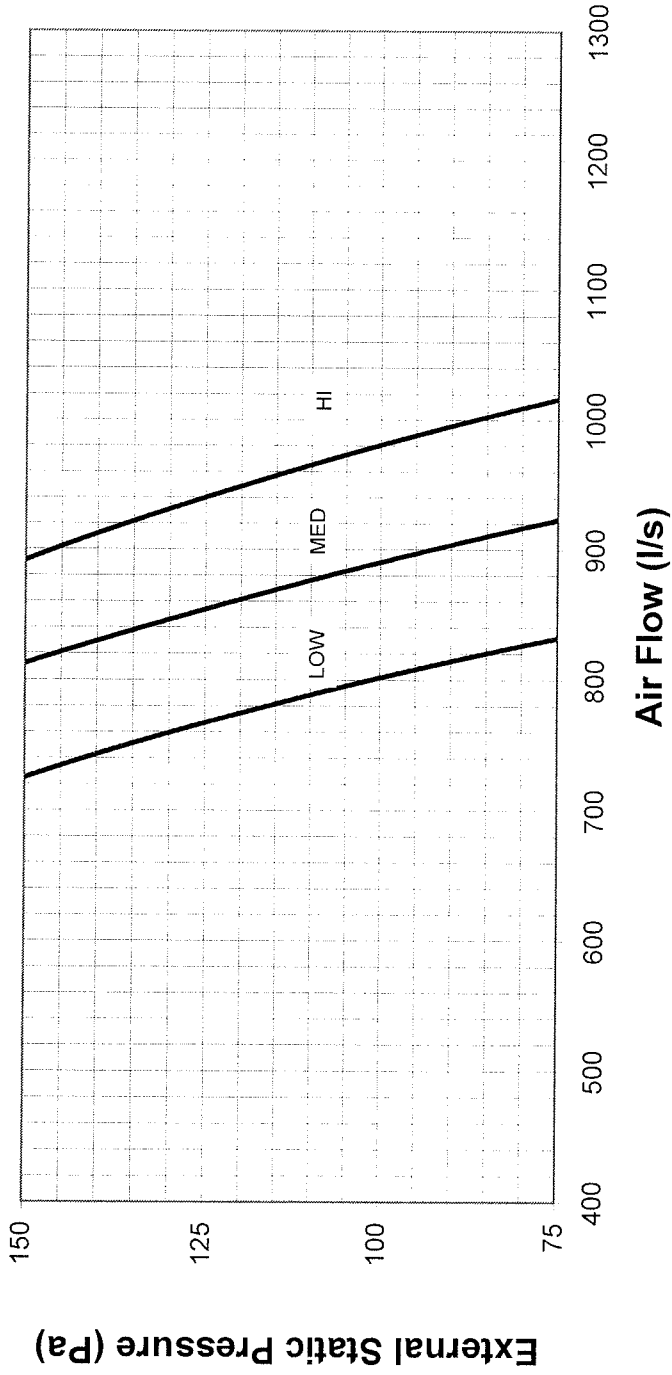
Released April 09.

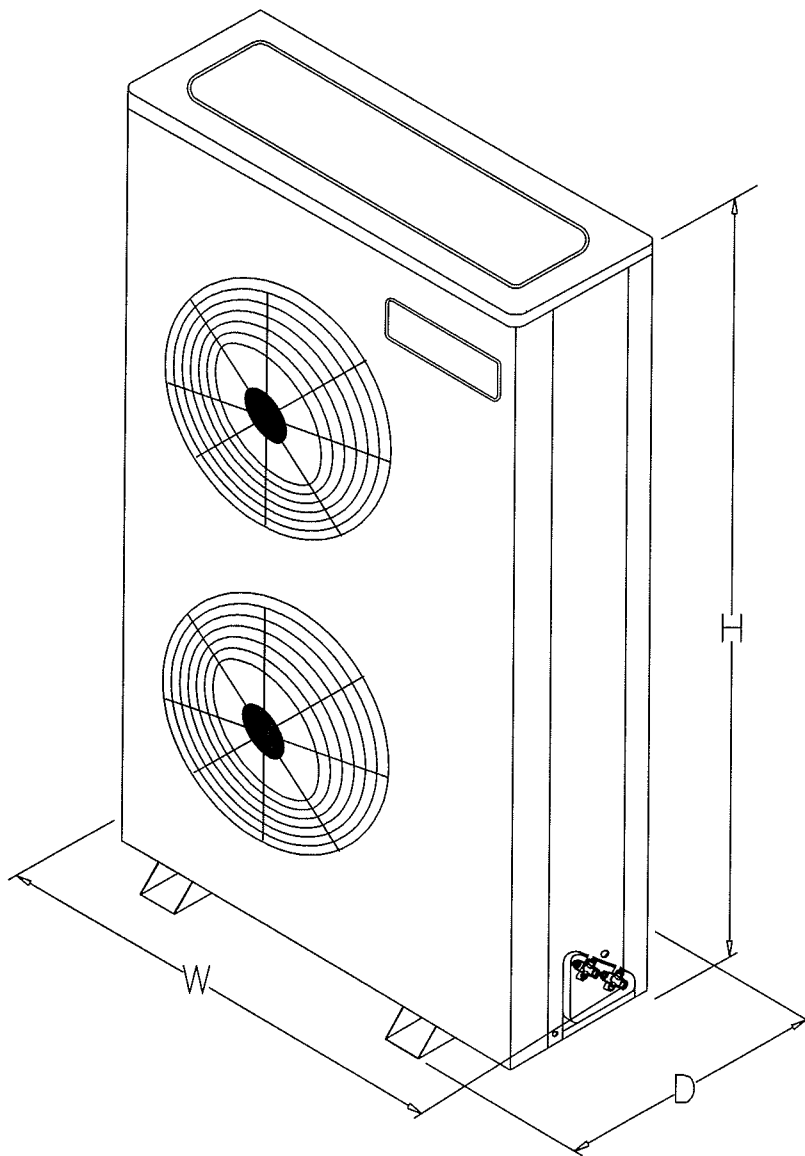
Cooling Performance Data Model AHU60R/LCU60R

INDOOR COIL ENTERING AIR TEMP °C		OUTDOOR COIL ENTERING AIR TEMPERATURE °C											
		30°C			35°C			40°C			45°C		
		Tot Cap	Sens Cap	LWB	Tot Cap	Sens Cap	LWB	Tot Cap	Sens Cap	LWB	Tot Cap	Sens Cap	LWB
DB°C	WB°C	kW	kW	°C	kW	kW	°C	kW	kW	°C	kW	kW	°C
21	17	17.33	11.13	11.30	16.39	10.65	11.60	15.29	10.11	12.00	14.14	9.54	12.40
	18	17.76	10.12	12.40	16.79	9.67	12.70	15.66	9.15	13.10	14.47	8.58	13.50
	19	18.67	9.07	13.30	17.62	8.65	13.60	16.39	8.16	14.00	15.04	7.64	14.40
	20	19.45	7.94	14.40	18.29	7.51	14.70	17.06	7.03	15.10	15.78	6.53	15.50
23	17	17.49	12.93	11.20	16.51	12.43	11.60	15.44	11.90	11.90	14.30	11.31	12.40
	18	17.89	12.09	12.30	16.88	11.60	12.60	15.79	11.07	13.00	14.60	10.48	13.40
	19	18.32	11.07	13.40	17.30	10.59	13.70	16.18	10.08	14.10	14.84	9.49	14.50
	20	18.90	10.07	14.40	17.71	9.60	14.80	16.55	9.10	15.20	15.24	8.52	15.60
	21	19.84	8.97	15.50	18.68	8.54	15.80	17.41	8.08	16.10	15.96	7.55	16.50
25	17	17.59	14.85	11.10	16.62	14.33	11.50	15.59	13.78	11.80	14.40	13.13	12.20
	18	18.05	13.88	12.20	17.03	13.37	12.60	15.96	12.83	12.90	14.75	12.23	13.40
	19	18.43	13.05	13.30	17.41	12.55	13.70	16.39	11.86	14.00	15.09	11.26	14.40
	20	18.89	12.01	14.40	17.84	11.54	14.70	16.69	11.02	15.10	15.41	10.42	15.50
	21	19.36	11.00	15.50	18.27	10.52	15.80	17.08	10.01	16.20	15.74	9.43	16.60
27	17	17.72	16.62	11.00	16.78	16.04	11.30	15.78	15.37	11.70	14.60	14.60	12.10
	18	18.13	15.75	12.10	17.16	15.24	12.50	16.09	14.66	12.80	14.87	13.99	13.20
	19	18.59	14.80	13.20	17.58	14.31	13.60	16.43	13.74	13.90	15.21	13.13	14.40
	20	19.07	13.81	14.30	18.01	13.33	14.60	16.81	12.78	15.00	15.56	12.18	15.40
	21	19.49	12.98	15.40	18.41	12.50	15.70	17.15	11.94	16.10	15.94	11.19	16.10
29	17	17.98	17.98	10.90	17.16	17.16	11.20	16.19	16.19	11.50	15.16	15.16	11.90
	18	18.31	17.47	12.00	17.33	16.83	12.30	16.20	16.18	12.70	15.17	15.17	13.10
	19	18.70	16.66	13.10	17.69	16.12	13.50	16.59	15.51	13.80	15.39	14.81	14.30
	20	19.17	15.72	14.20	18.10	15.20	14.60	16.93	14.63	14.90	15.68	14.00	15.40
	21	19.66	14.75	15.30	18.54	14.24	15.70	17.30	13.67	16.00	16.03	13.08	16.50
31	17	18.66	18.66	10.60	17.79	17.79	10.90	16.80	16.80	11.30	15.73	15.73	11.60
	18	18.65	18.65	11.90	17.80	17.80	12.10	16.82	16.82	12.50	15.74	15.74	12.80
	19	18.93	18.29	13.00	18.00	17.59	13.30	16.82	16.82	13.70	15.74	15.74	14.00
	20	19.31	17.53	14.10	18.27	16.99	14.50	17.10	16.33	14.80	15.86	15.50	15.20
	21	19.74	16.62	15.20	18.67	16.11	15.60	17.43	15.51	15.90	16.19	14.88	16.40

Capacity multipliers should to above capacities to adjust for reduced or increased air flow.

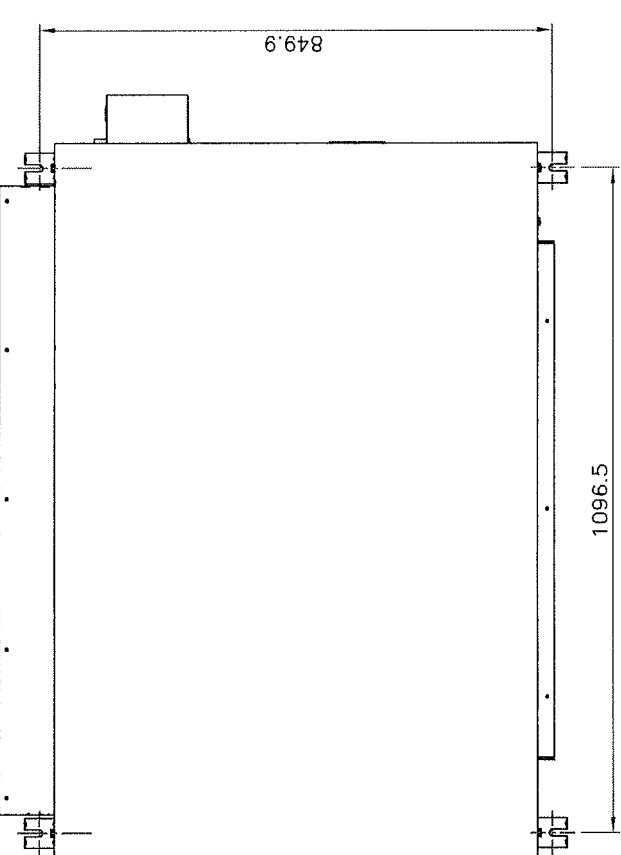
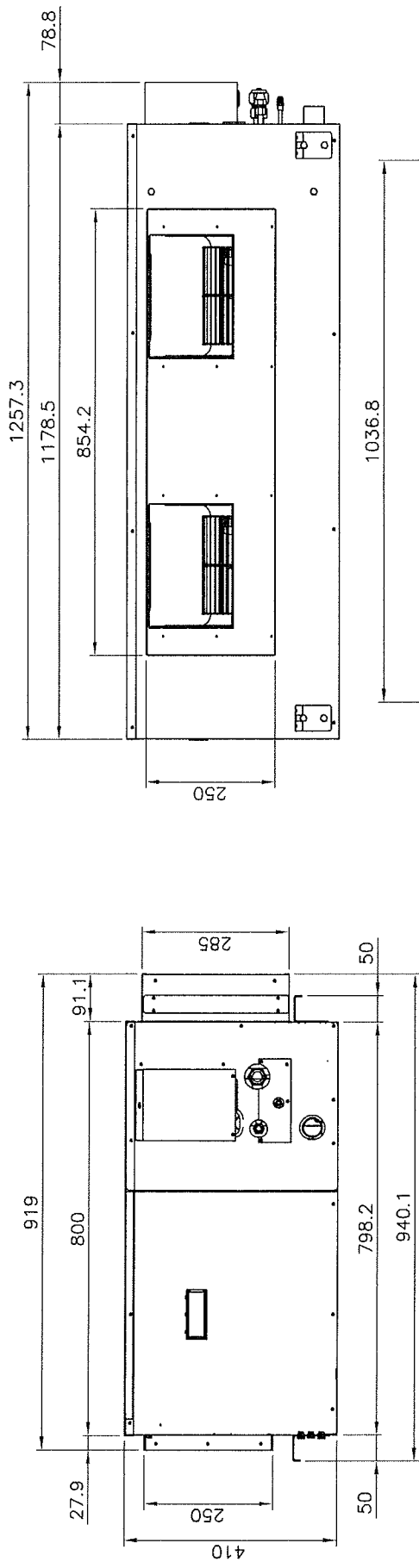
PERFORMANCE CURVE OF AHU-60(new)
(220/240 V. - 50Hz.)

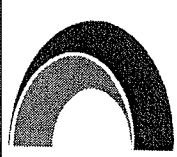




MODEL	CAPACITY BTU/H (kW.)	DIMENSION (MM.)			SERVICE VALVE SIZE (mm)	
		H	W	D	LIQUID	SUCTION
LCU60	60,000 (17.58)	1250	976	400	12.7(1/2")	19.05(3/4")

PRODUCT DIMENSION LCU60



REVISION RECORD		ITEM	PART NAME	MATERIAL	SIZE	QTY.	DWG. NO.
ITEM	DESCRIPTION/DETAIL	NAME	DATE	 DUNNAIR (Aust) Pty Ltd			
				UNIT : mm.	DRAWING No. : -	REV. 0	TOLERANCE ± 0.5

TITLE : Product Dimension AHU 60(new)
 DRAWN : S. TOON
 CHECKED : A. CHAN
 APPROVED : DI MARTINO GIUSEPPE
 DATE :
 DATE :
 DATE :
 PART NUMBER :
 SCALE : 1 : 1