

# Fan Coil Unit

## Ceiling Concealed

### FCU80

#### Model Number Configuration

FCU80-AWS-2	:	2 Row: Standard 12Watt Motor: Ceiling Concealed Model
FCU80-AWS-3	:	3 Row: Standard 12Watt Motor: Ceiling Concealed Model
FCU80-AWM-2	:	2 Row: Medium 30Watt Motor: Ceiling Concealed Model
FCU80-AWM-3	:	3 Row: Medium 30Watt Motor: Ceiling Concealed Model
FCU80-AW-HD-2	:	2 Row: High 50Watt Motor: Ceiling Concealed Model
FCU80-AW-HD-3	:	3 Row: High 50Watt Motor: Ceiling Concealed Model

#### PERFORMANCE DATA

#### RETURN AIR

Model	Row	Air Flow			Rated Cooling Capacity	Rated heating Capacity	Water Flow	Water Resistance	Noise			Input Power			Weight		
		L/S							dB (A)			(W)			(kg)		
		H	M	L					12 <sup>1</sup>	30 <sup>2</sup>	50 <sup>3</sup>	12 <sup>1</sup>	30 <sup>2</sup>	50 <sup>3</sup>	12 <sup>1</sup>	30 <sup>2</sup>	50 <sup>3</sup>
FCU80-2	2	377.8	270.8	204.2	7.10	10.65	0.34	39	44	46.5	50	126	142	174	26	26	29
FCU80-3	3	377.8	270.8	204.2	7.50	12.05	0.37	39	44	46.5	50	126	142	174	28	28	31

#### Notes for Return Air :

1. Cooling: Air on temp. DB/WB 27°C/19.5°C, Water in/out temp.7°C/12°C.
2. Heating: Air on temp. 21°C DB . Water in temp. 60°C.

#### SPECIFICATION

- **Forward curved centrifugal fan**
- **Single phase motor & direct drive**
- **Coils: Copper tube & Aluminum fins**
- **Galvanised sheet casing**
- **A3 steel sheet painting drip-tray**
- **Capacitance type motor**

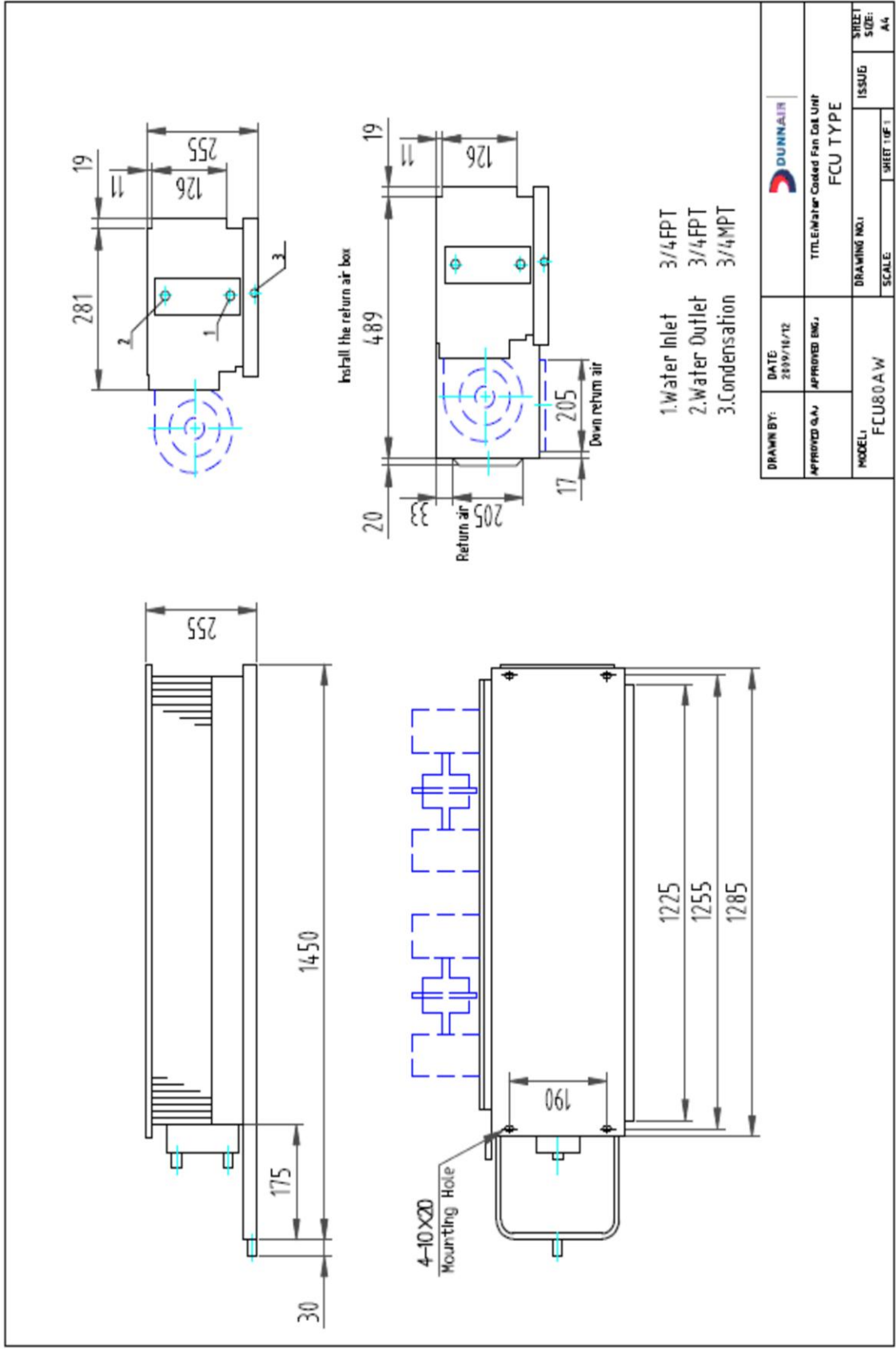
<sup>1</sup> Standard Watt Motor (Pa)

<sup>2</sup> Medium Watt Motor (Pa)

<sup>3</sup> High Watt Motor (Pa)

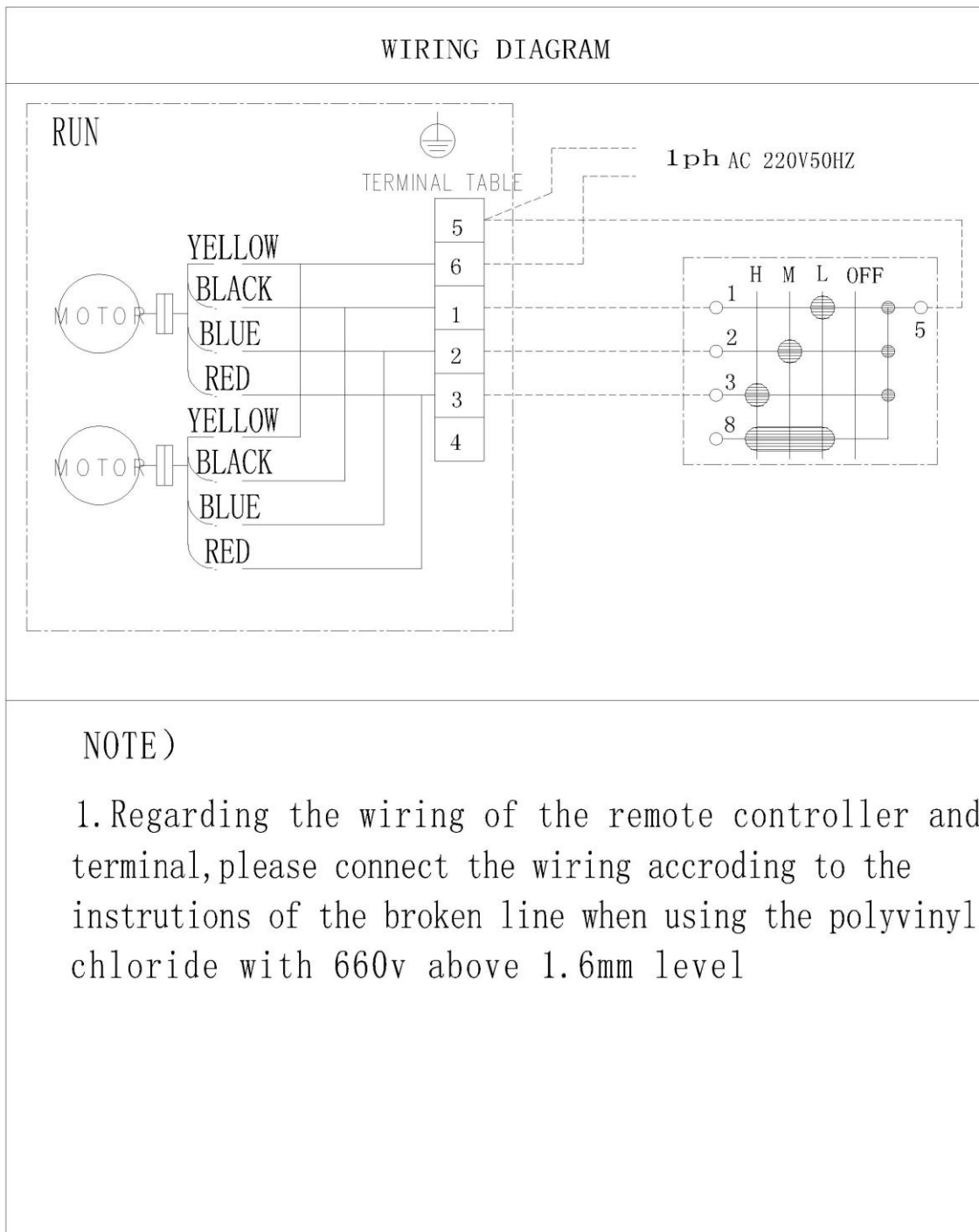
# Ceiling Concealed

# FCU80



# FAN COIL UNIT

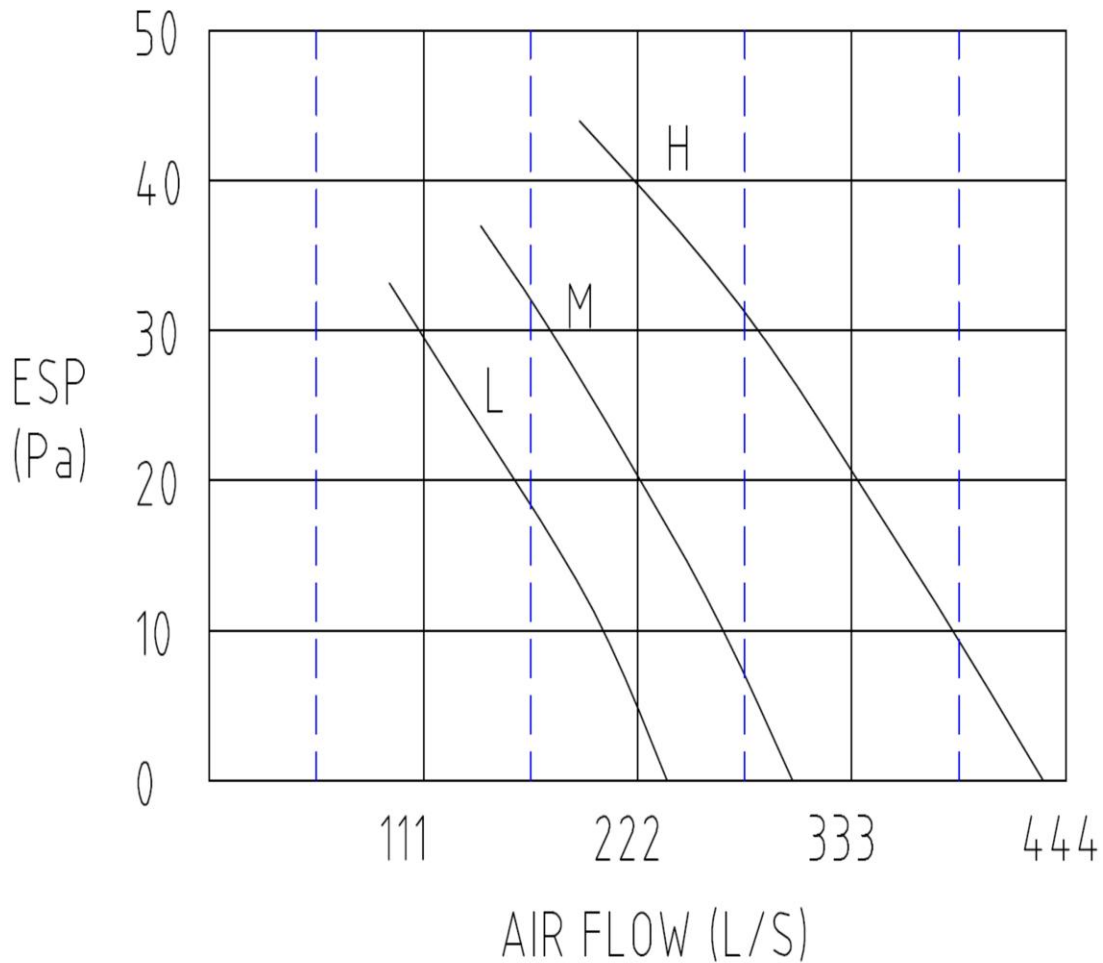
## *Ceiling Concealed FCU80*



# FAN COIL UNIT

## *Ceiling Concealed FCU80*

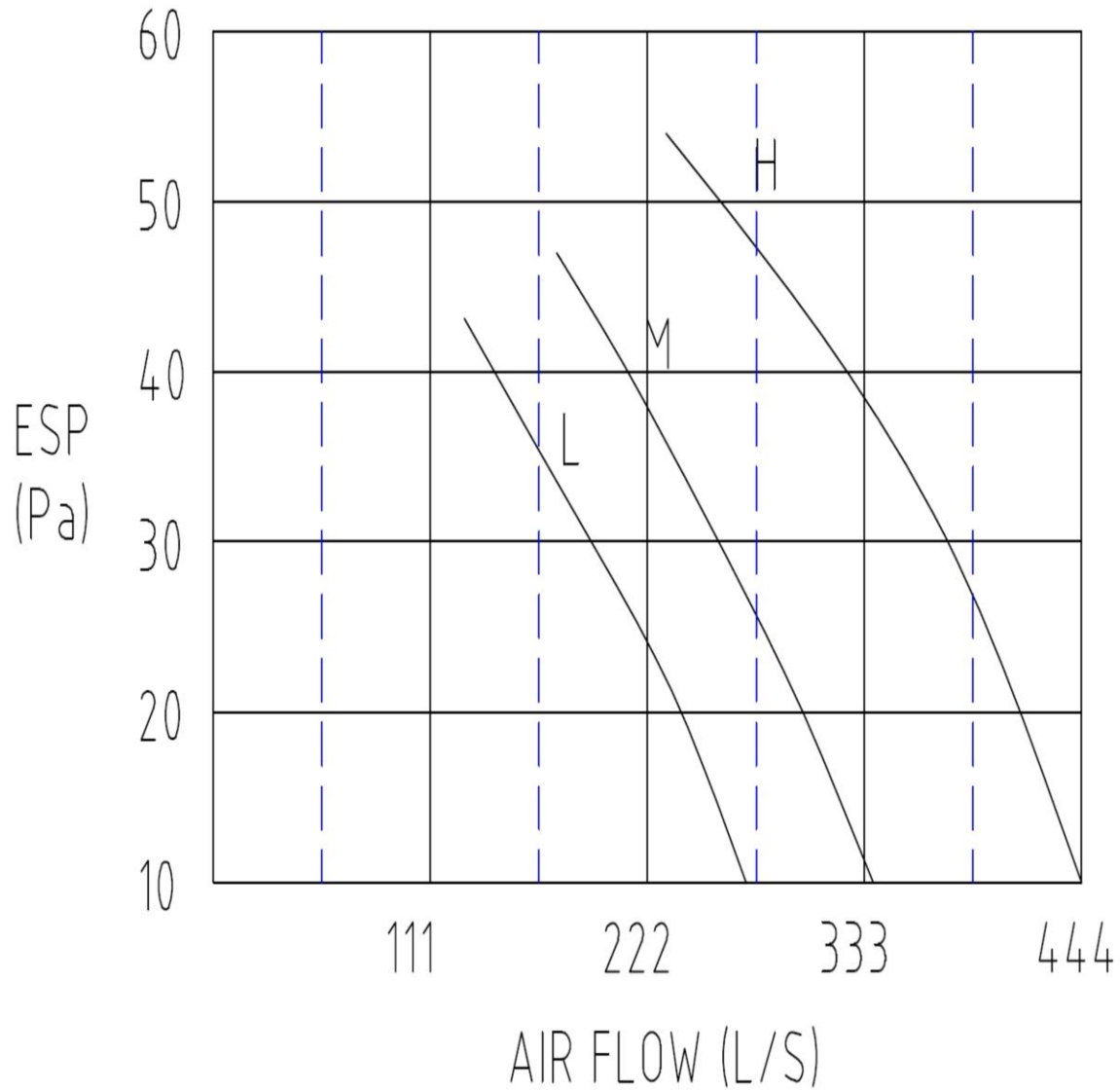
FAN CURVE – Standard 12 Watt



# FAN COIL UNIT

## *Ceiling Concealed FCU80*

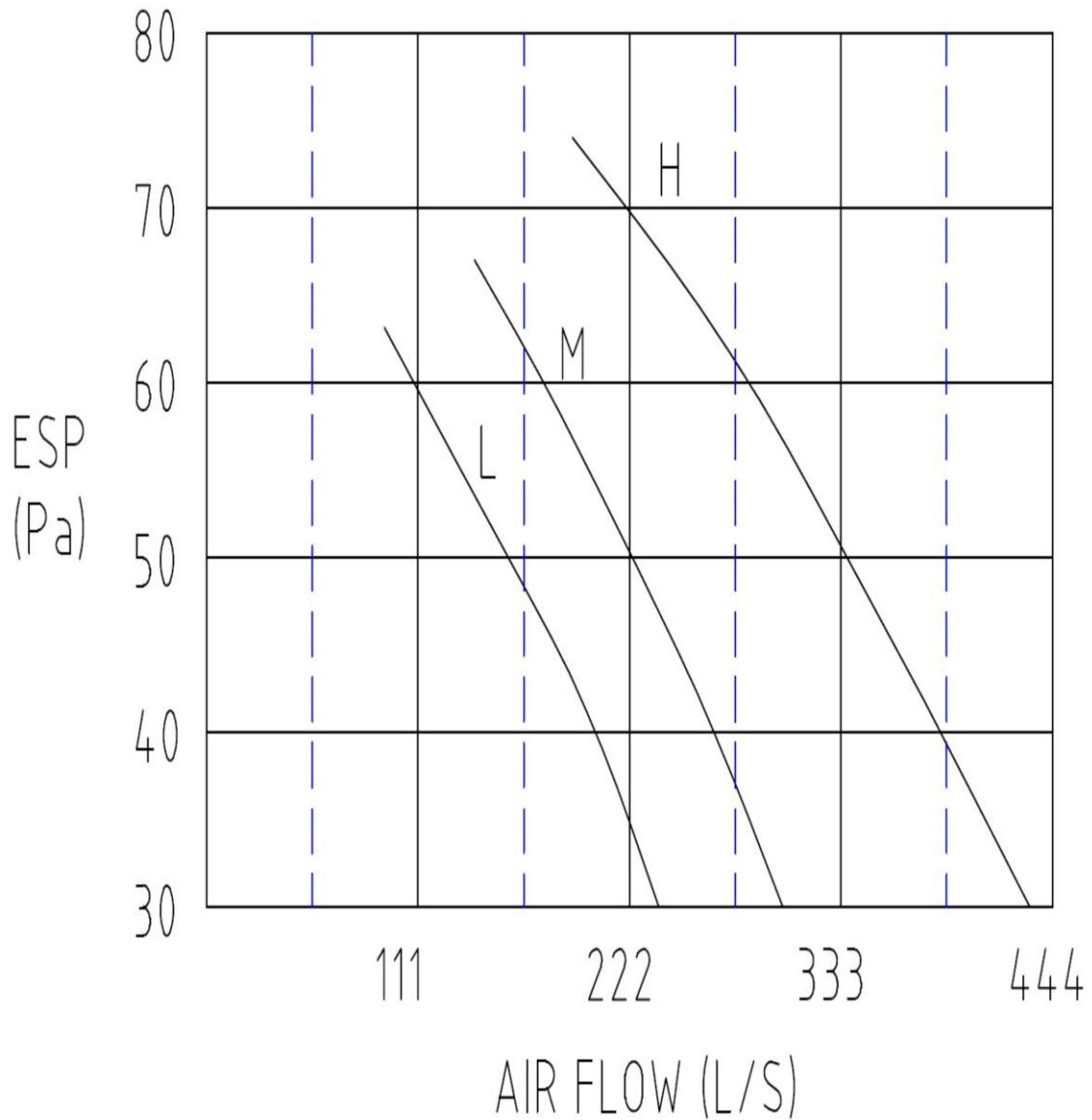
### FAN CURVE – Medium 30 Watt



# FAN COIL UNIT

## *Ceiling Concealed FCU80*

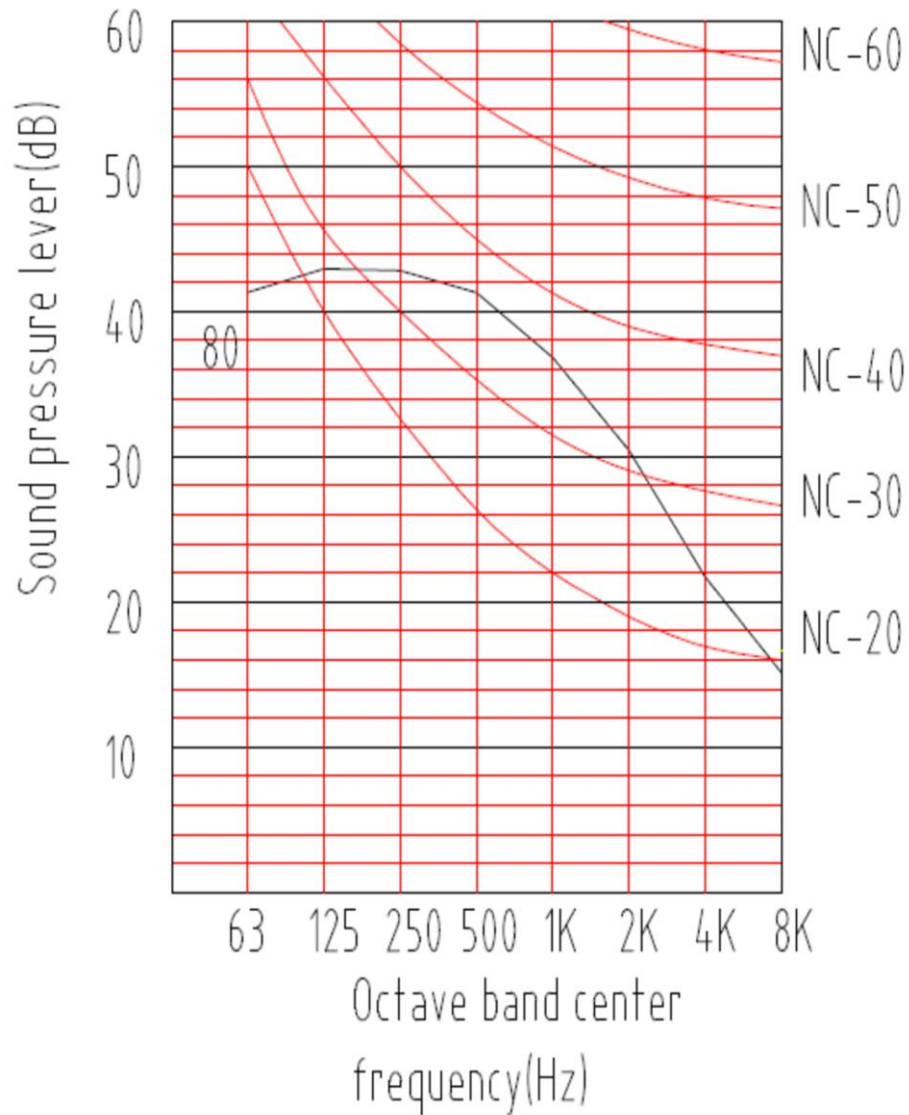
### FAN CURVE – High Static 50 Watt



# FAN COIL UNIT

## *Ceiling Concealed FCU80*

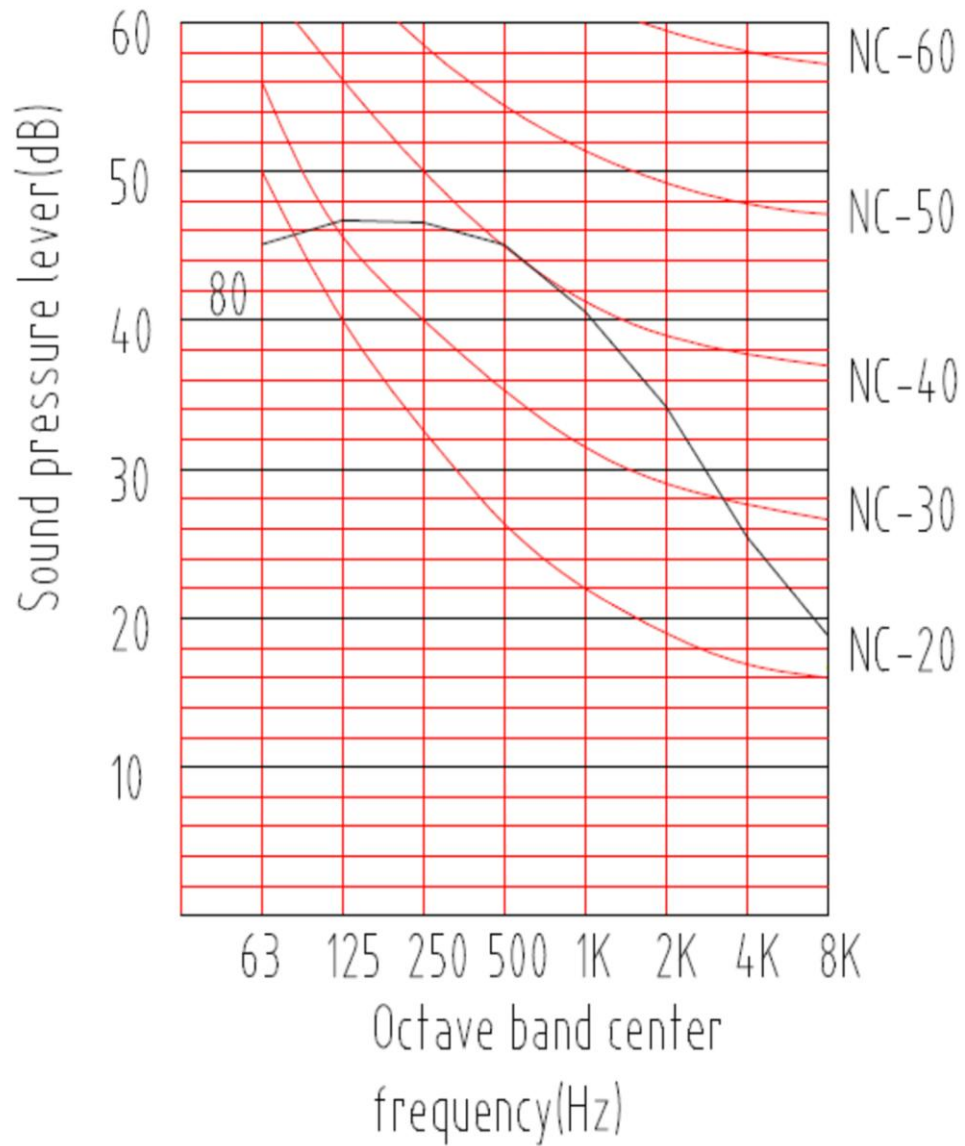
### NOISE CURVE – Standard 12 Watt



# FAN COIL UNIT

## *Ceiling Concealed FCU80*

### NOISE CURVE – Medium 30 Watt



# FAN COIL UNIT

## *Ceiling Concealed FCU80*

### NOISE CURVE – High Static 50 Watt

